

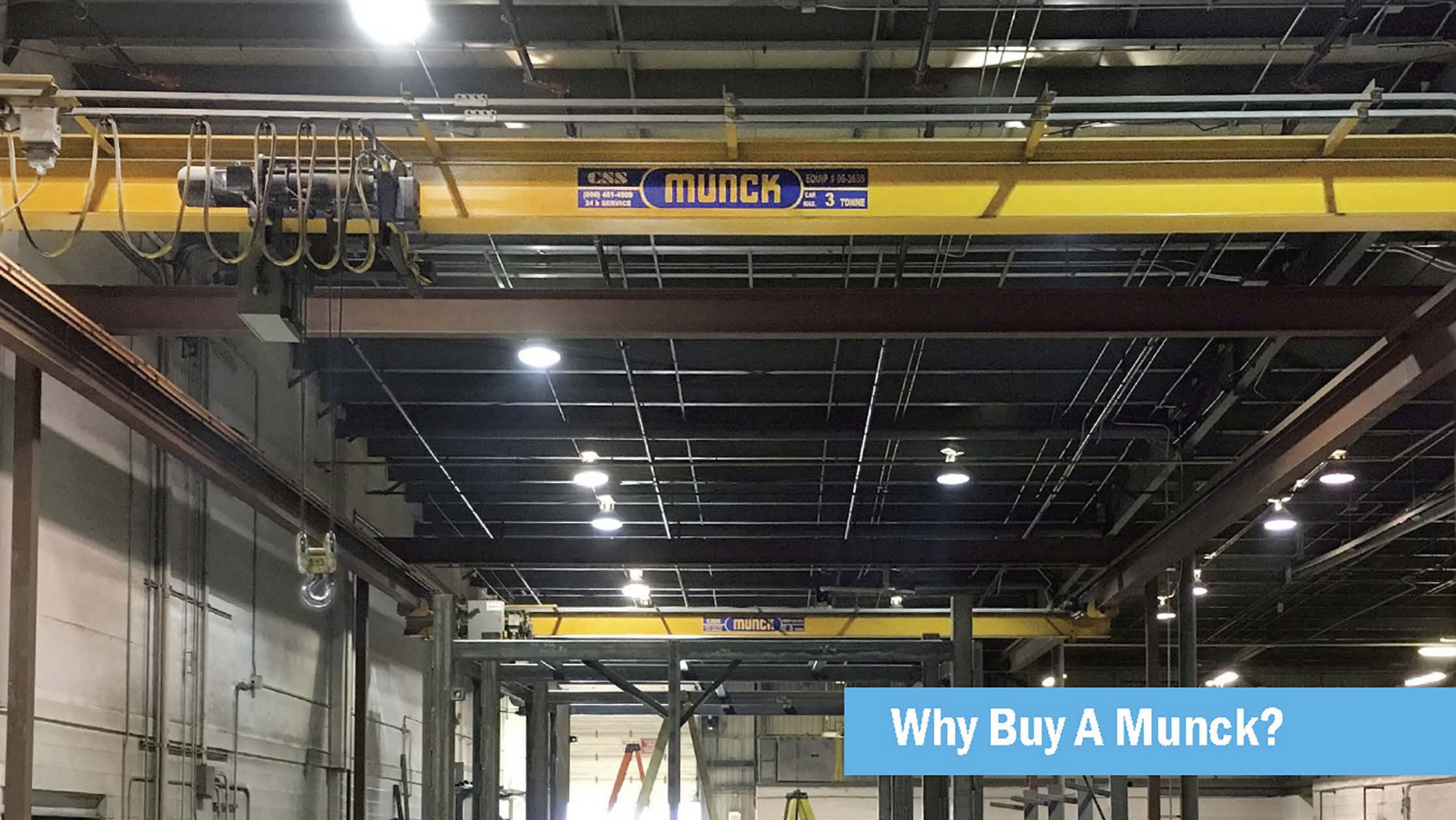
# MANUFACTURERS OF OVERHEAD CRANES & HOISTS



## Top Running, Single Girder Overhead Cranes Engineering & Design Data



**A perfect balance between  
mechanical & electrical  
components.**



## Why Buy A Munck?



**SAFETY FIRST:** Simple for your employees to operate; with many built-in safety features that meet or exceed government requirements.



**CONFIDENCE** in knowing our products are ESA & CSA approved while also being designed & certified by in house professional engineers.



**UNBEATABLE INVESTMENT:** Munck Hoists from the 60's, 70's, are still in operation today. Load test certificate supplied with all cranes.



**SAVETIME:** We stock all standard components and common wear parts to minimize your company's downtime.



**ROUND THE CLOCK:** Professional & experienced support staff to help solve all of your material handling requirements.



**SERVICEABILITY:** Built to save you time & money, from "Plug & Play" electrics to our "Open Concept" component layout for ease of service access.



# What Our Customers Are Saying



“Zeton designs and builds modular pilot plants, which are often a speedbump on the critical path for massive investments in new technology made by some of the world’s largest chemicals, energy and mining companies. We are always under a time crunch- always being pushed to work faster, on projects which require heavy and complex lifts during both manufacturing and loading of the finished modules. The overhead cranes in our custom-built manufacturing high bays are among our most important employees- we literally cannot build or ship our product without them. When we decided to build our new manufacturing facility, Denis Noel of Munck worked tirelessly with us to optimize the configuration and layout of the cranes, which in turn helped us to set the dimensions of our super-high bay, squeezing every inch of productive space and rigging height out of the machines and the building. We’re very proud of the result, and trust that our eight newest employees will be serving us to their full potential in the immediate future!”

Paul Martin, P. Eng.  
Program Manager and Sr. Technical Fellow



“Eurospect Manufacturing Inc. is pleased with the overall performance and robustness of our Munck cranes. We have 8 cranes from 3 Ton to 15 Ton. Aside from normal wear and tear items we see during our semi-annuals, the units hold up great despite them taking our daily abuse handed out by rafts of apprentices to our 20 year veterans. We look forward to another trouble free 10 years ahead.”

Mark Hirsch  
Maintenance Manager



“The Munck Cranes have been a great asset to our facility and have really helped improve our entire production. The overhead cranes have met all of our expectations; we use them on a daily basis and we haven’t had any problems or issues with their performance. The addition of our new Munck Cranes have given us the ability to convert our old warehouse into a new fabrication shop. The overhead cranes help to make our marine project assembly process a lot easier. In the past we’ve used large forklifts for flipping or positioning components and for building assemblies, however; we now use the cranes because they’re much more accurate and save us a lot of time.”

Mark Poss  
Steel Supervisor



“We required a new overhead crane in our service department to disassemble & assemble gearboxes and motors. Our company is very happy with the quality of both the hoist and crane supplied by Munck. Their sales and support team are always available to help with any requirements that we have.”

Scott Gallop  
Product Manager - Service



CSS  
(800) 461-4509  
24 H. SERVICE

munck

CSS  
(800) 461-4509  
24 H. SERVICE

munck

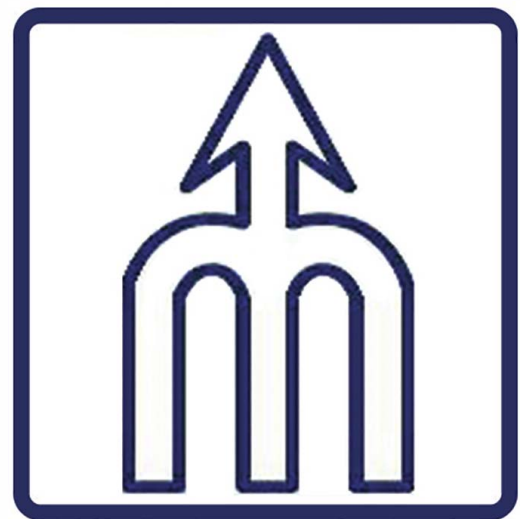
## TECHNICAL DESCRIPTION

- Our bridge girders are designed to meet CMAA/ISO specifications
- Both rolled structural shapes & welded plate box girder designs are used depending on the requirements
- Box girders are fabricated from certified material
- End Trucks are manufactured from structural sections and are machined to ensure alignment of the bearings & wheel assemblies
- Bridge to End Truck connections are bolted
- Live axle bridge wheels are flanged with anti-friction bearings
- Rail sweeps/drop stops & rubber bumpers are standard on all end truck

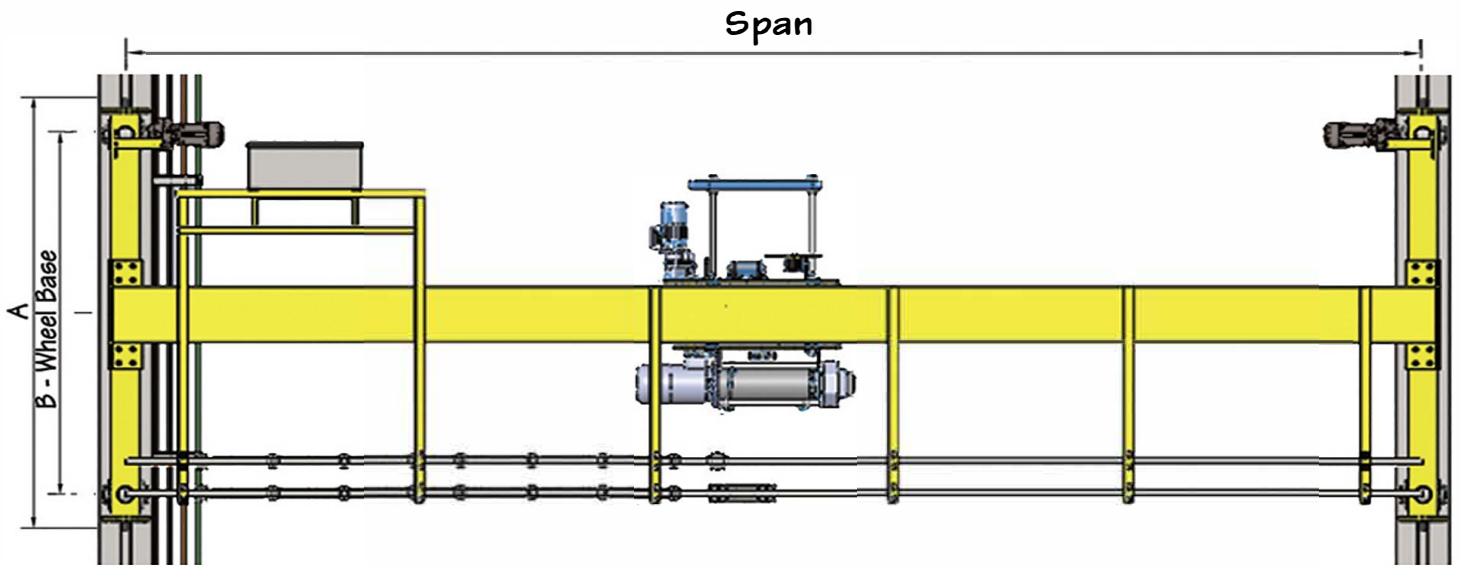


## HOISTING MACHINERY

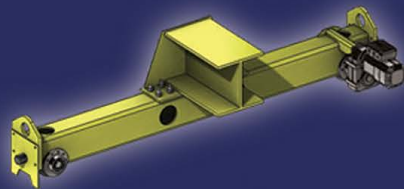
- The hoisting machinery consists of a **MUNCK heavy duty industrial type standard wire rope hoist unit mounted on a low headroom type trolley**
- **Motors are totally enclosed fan cooled, hoist duty with Class "F" insulation**
- **Gears are precision machined from alloy steel and induction hardened**
- **All gearing is enclosed in a rugged steel housing and is oil splash lubricated**
- **Steel wire rope drums are precision machined**
- **Rope drums are available in both single & double grooved configurations**
- **Hoists are equipped with rope guides to prevent over lapping of the rope on the drum and to extend the life of the rope**
- **Upper and lower hoisting limit switches are standard equipment**
- **The trolley is fabricated from structural shapes and plates to suit the application**



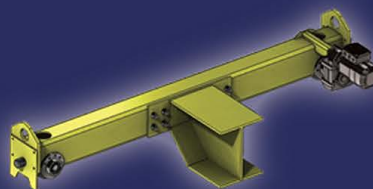
# Crane Reference Diagram



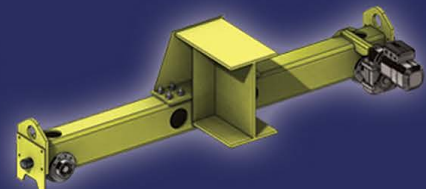
## Available Bridge to Endtruck Connections



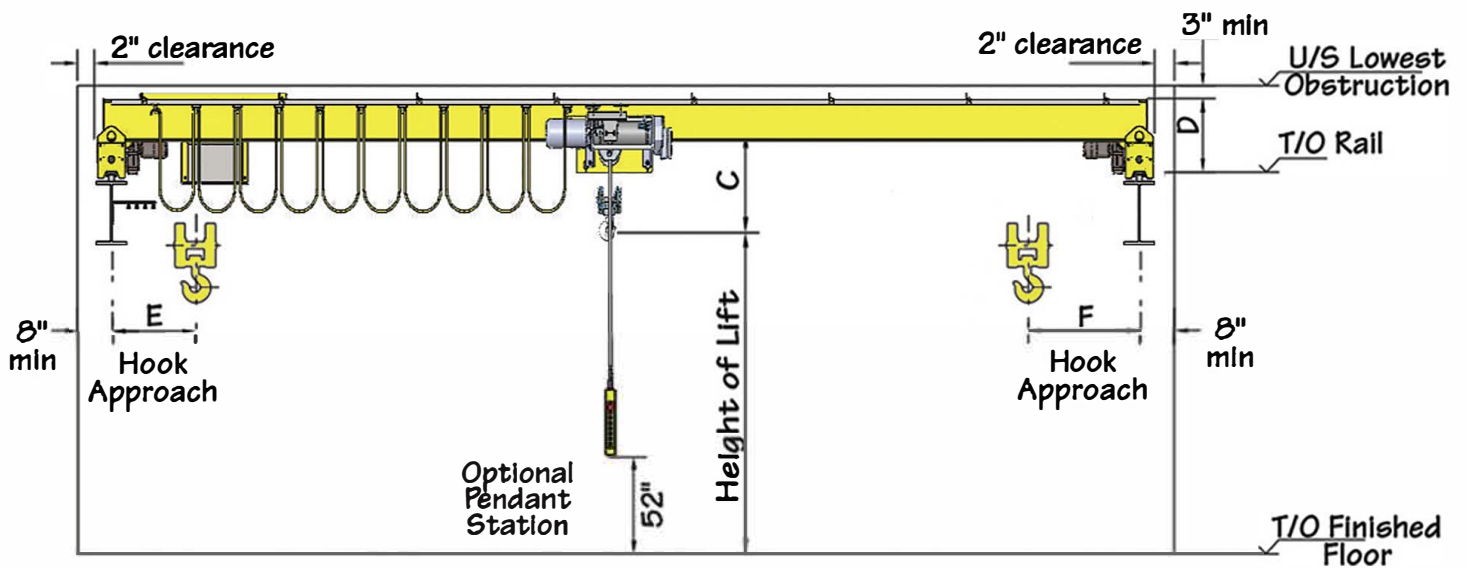
Standard (Ds)



Shear (Dsh)



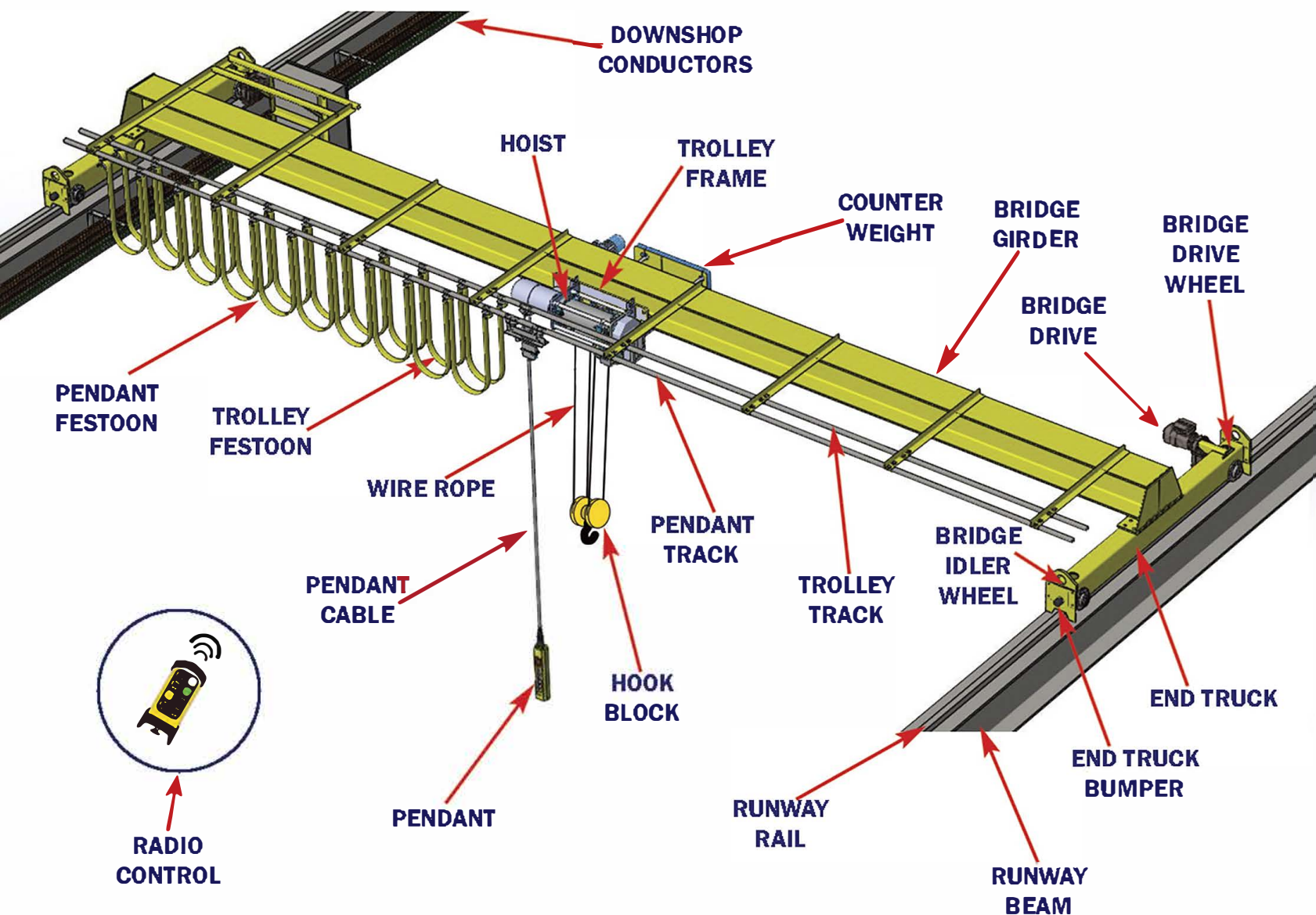
Coped (Dc)



Munck Cranes Inc. assumes no responsibility for, but not limited to, any events or damages which occur as a result of the use of any data contained in this brochure. It should be noted that these figures are supplied to give a general understanding of the specifications relating to any particular capacity of top running, single girder, overhead crane and should not be taken as a basis for construction of any kind. All calculations for actual work to be performed should be done so only by a recognized professional in the industry and only after the unique situations and circumstances to the particular job or job site are considered.



# Crane Component Diagram



## CRANE CONTROLS

- Each crane can be supplied with an optional radio remote control system.
- Other types of controls such as cab controls, infrared, or a pendant control station sliding on independent track are available as options.
- Munck Cranes are supplied with variable speed controls for trolley and bridge motions. The hoist is supplied with a 2-speed configuration; variable speed hoist control is available upon request.
- The electrical components are housed in electrical cabinets to suit the applicable environment.
- The standard bridge electrification is provided via a flat cable festoon system suspended from a track.

# RUNWAY SYSTEMS

- Custom designed to suit many applications as part of a "Total Crane System" package.



## OPTIONAL FEATURES

The following features can be supplied:

- Overload Switch
- Power Circuit Limit Switch
- Rotation Warning Beacon
- Anti-Collision Equipment
- Runway Electrification
- Travel Limits For Bridge & Trolley
- Weighing Equipment
- Variable Speed Hoist Control
- 2 Speed Bridge & Trolley Motions
- Bridge Lights
- Warning Horn or Bell
- Anti-Side Pull Sensors

Other options are available on request.

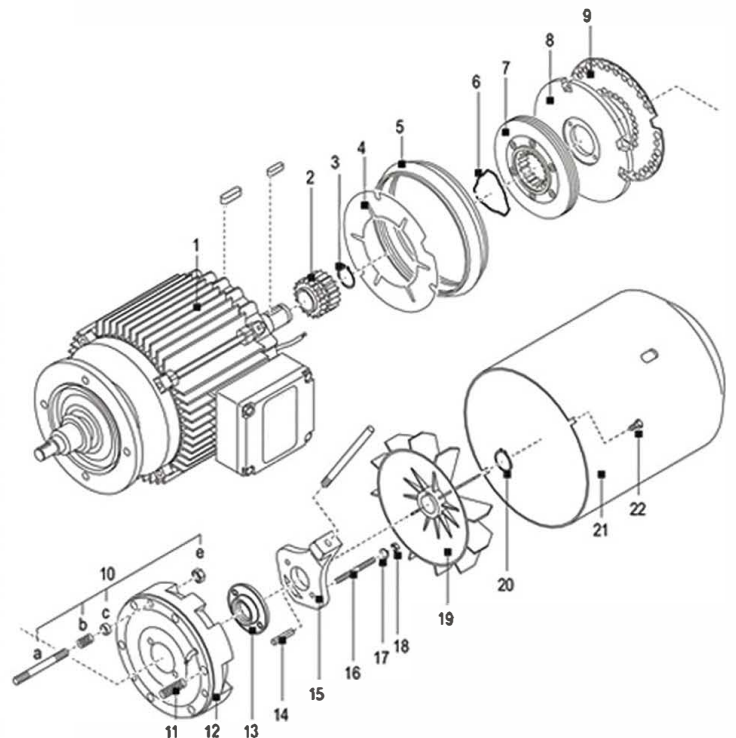


## SURFACE TREATMENT

- The hoist is finished in enamel paint.
- The crane steel structure is thoroughly wire brushed and finished with anti-corrosion paint.

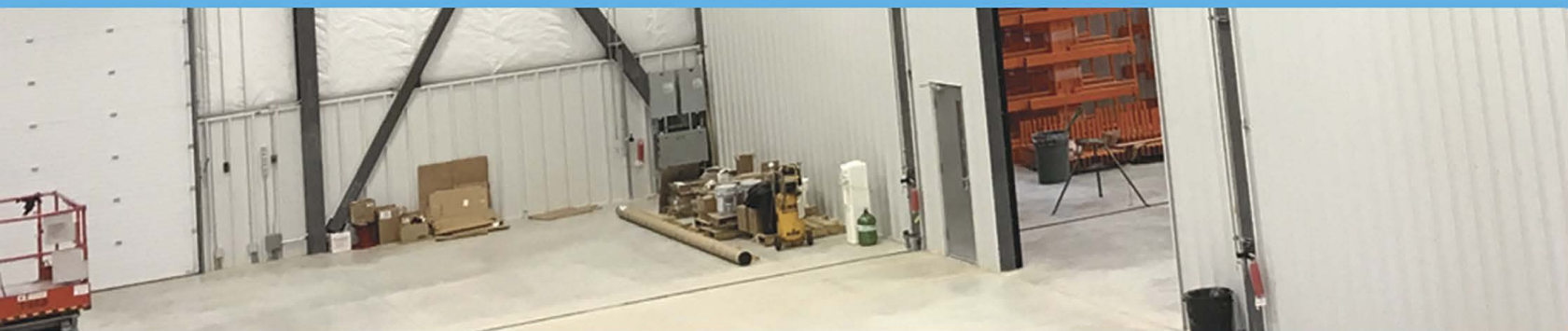
## MOTORS & BRAKES

- All motors are specifically designed for hoist and crane duty
- All motors are totally enclosed fan cooled with Class "F" insulation
- Dual motor bridge drives are standard
- Other drive types are available upon request
  
- All hoist, trolley, and bridge motors have disc brakes as standard equipment
- Brake linings are asbestos free
- High torque; electromechanical brakes
- All hoists can be supplied with an optional secondary braking system





- Recognized as a quality manufacturer of wire rope hoists & overhead cranes
- Used in a wide range of lifting applications from light duty to severely industrial
- Over 80 years of experience and a complete devotion to this market
- We utilize the latest technologies to build safe, high performance equipment
- Reliable services in more than 60 countries world wide
- Rugged construction & space saving design for maximum utilization of working area





## **Munck Cranes USA Inc.**

4025 Walden Ave.  
Lancaster, NY

14086, USA

TF: 1-800-699-9405

P: (716) 875-9405

F: (716) 875-7914

[www.munckcranesusa.com](http://www.munckcranesusa.com)  
[sales@munckcranesusa.com](mailto:sales@munckcranesusa.com)  
[parts@munckcranesusa.com](mailto:parts@munckcranesusa.com)



4025 Walden Ave, Suite 6, Lancaster, NY, 14086, USA  
1-800-699-9405 | Tel: (716) 875-9405 | Fax: (716) 875-7914  
[sales@munckcranesusa.com](mailto:sales@munckcranesusa.com) | [www.munckcranesusa.com](http://www.munckcranesusa.com)

